

David Wilkinson

Helios EN010140

Reg 20050592

Date 15/04/2025

Hi team,

I have sent a package recorded delivery, which contains some maps and an HDSC card with some videos I have taken.

Please look at Map 1 to see just how close from viewpoint 3A to Chestercourt Cottages-is a mere 140 meters approx.

These fields will be filled with 3 meter high Solar Panels complete with their control gear which I suspect may be the Invertor Stations. Potential Noise/Fire

Living with the views would be awful, but having to put up with the constant noise of a ticking timebomb 24/07/365 days per year doesn't bear thinking about.

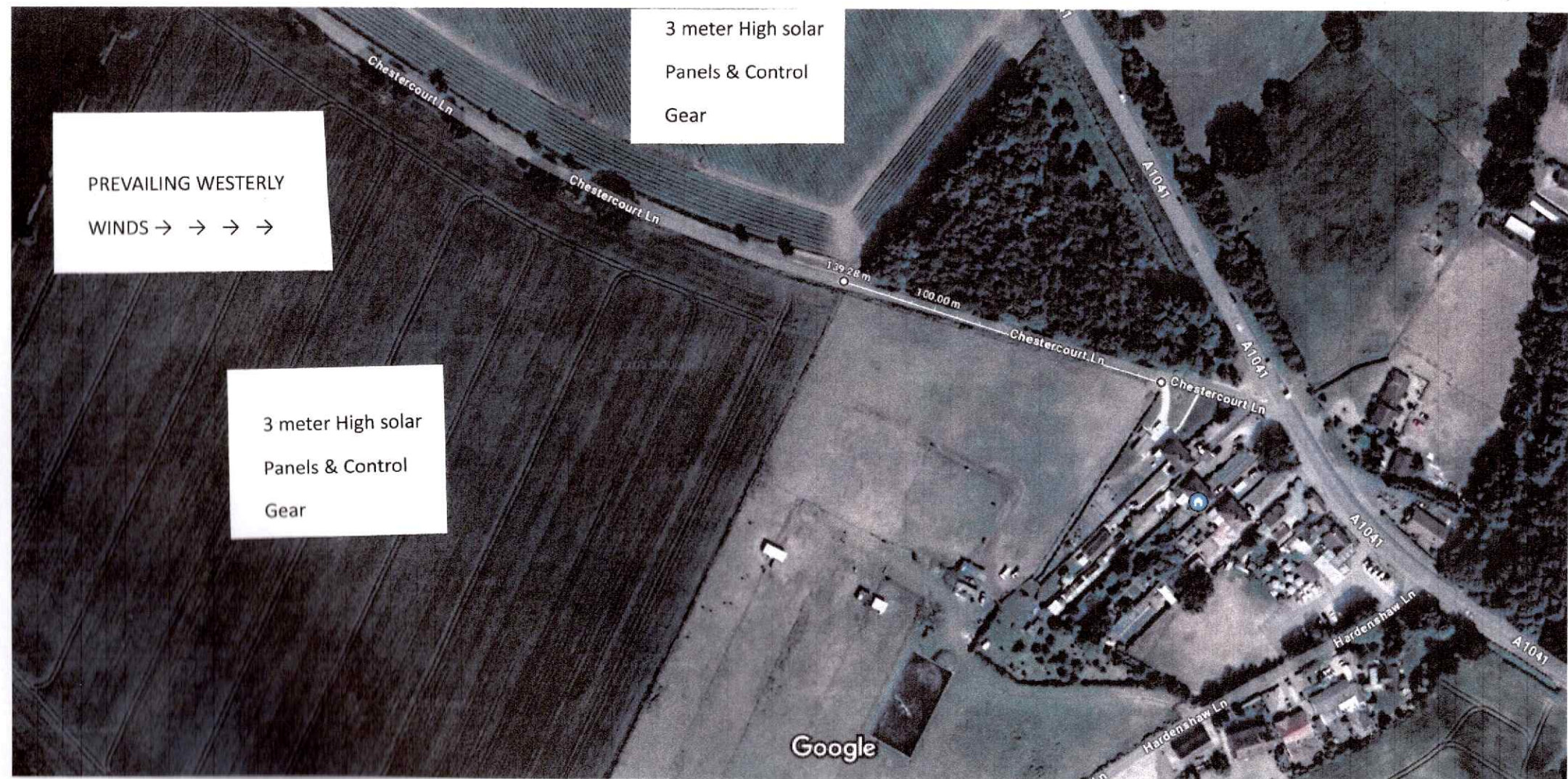
It is my opinion that Helios have placed the Bess for purely keeping the build costs down, without any thought or consideration to the substantial housing so close that will definitely be affected.

At the moment I think it is a free for all, with these companies chancing their luck at the moment, as they are relatively in their infancy and trying to get away with what they can. It is my opinion that legislation will catch up with them, especially where they site the Battery Energy Storage Systems, and Solar Panels with their control gear, so close to habitation, with the potential harmful risks to all life plus the pollution.

Please look out for the small HDSC card once opened.

Kind regards

David Wilkinson

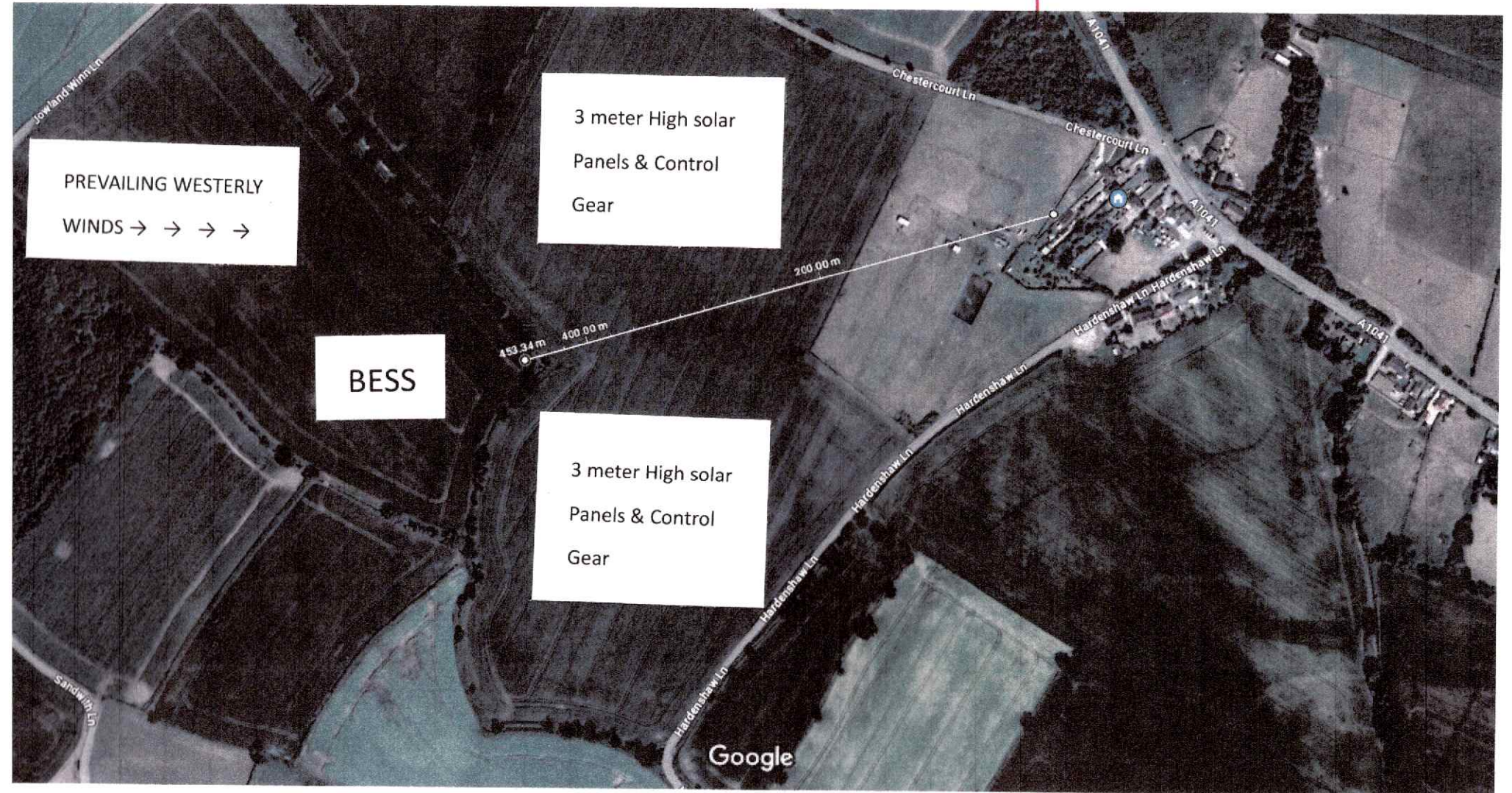


Imagery ©2025 Airbus, Maxar Technologies, Map data ©2025 20 m



Measure distance
Total distance: 139.28 m (456.95 ft)

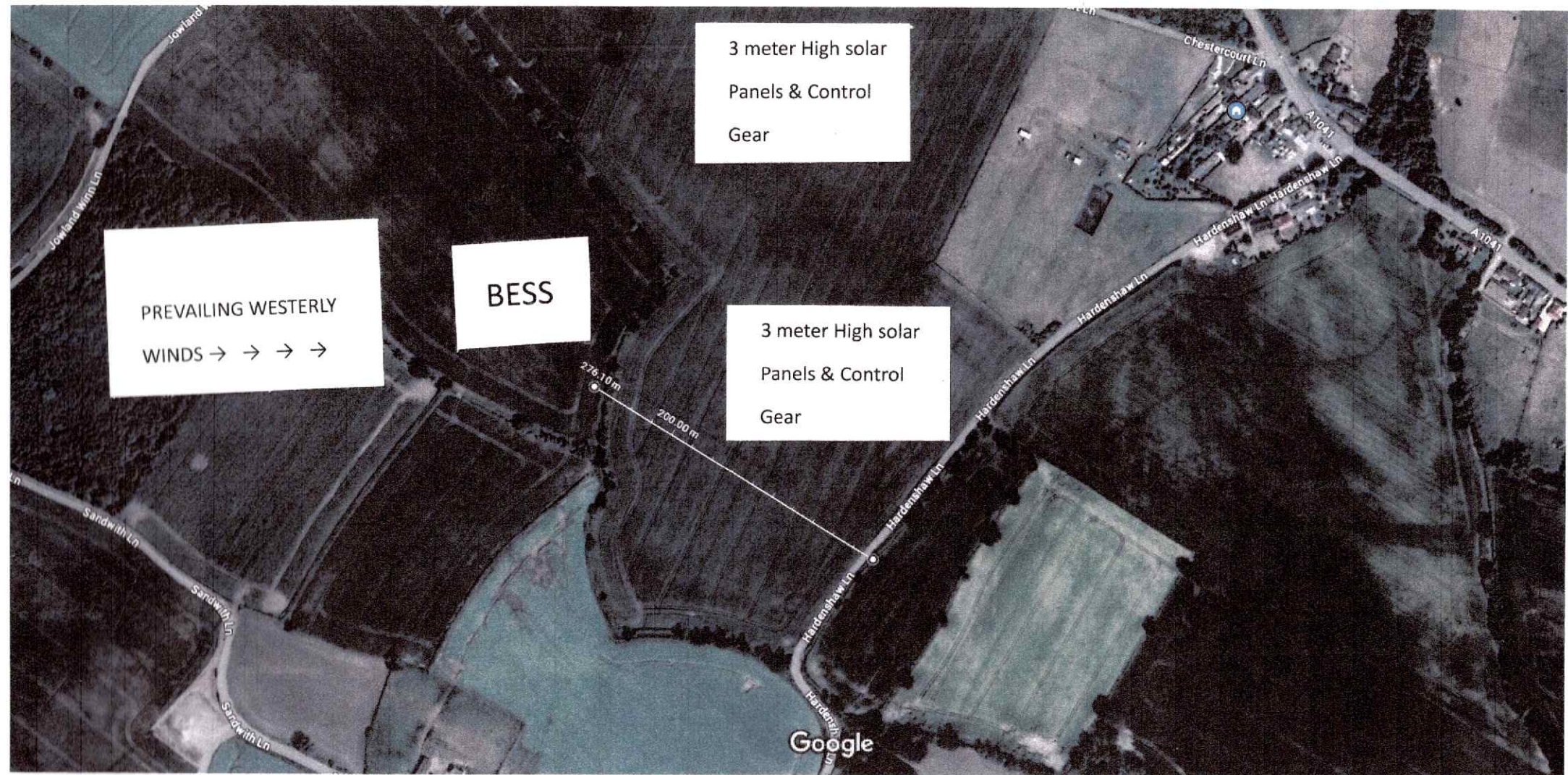
CROSSLEY WOOD



Imagery ©2025 Airbus, Maxar Technologies, Map data ©2025 50 m

Measure distance

Total distance: 453.34 m (1,487.35 ft)



Imagery ©2025 Airbus, Maxar Technologies, Map data ©2025 50 m

Measure distance
Total distance: 276.10 m (905.84 ft)